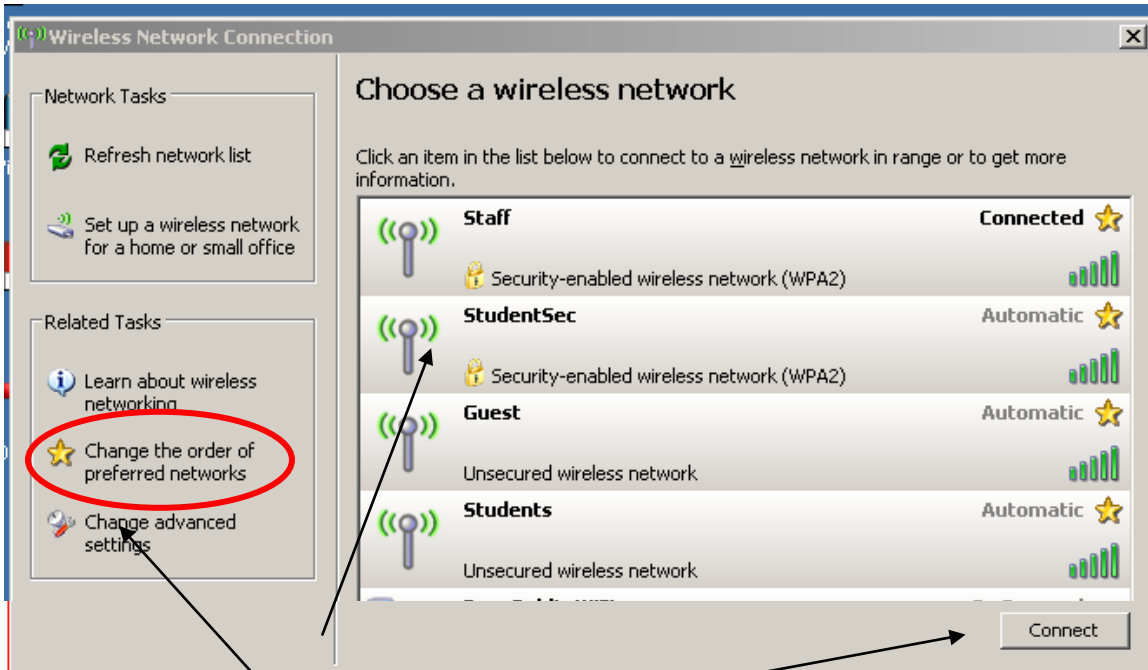


Connecting to the Secured Student Wireless Network - Windows XP

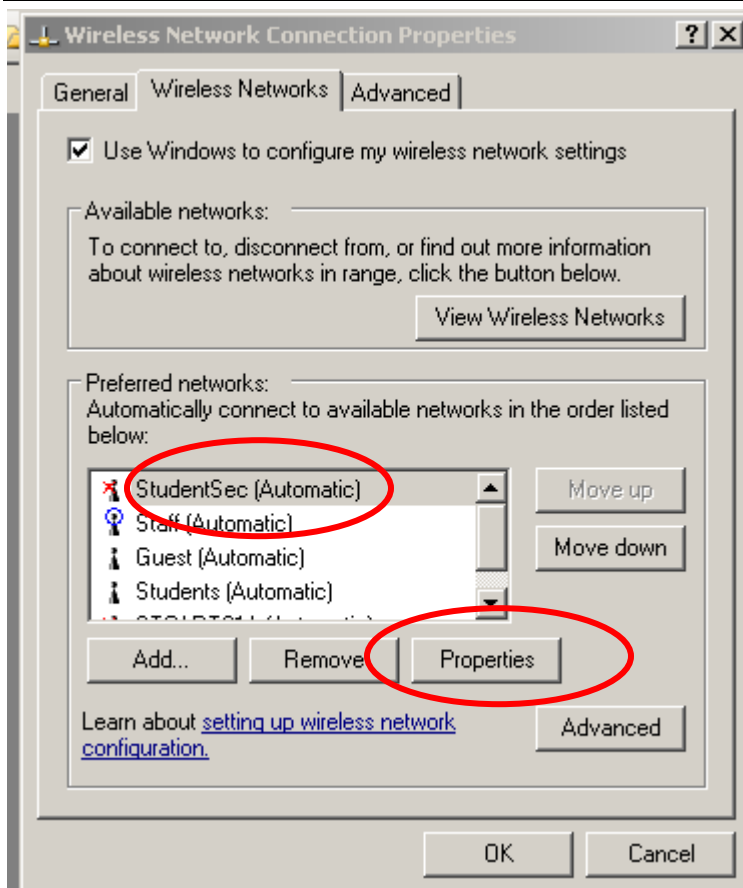
This assumes that you are using Windows to manage your wireless connections.

1. Click on the wireless icon in the taskbar in the lower right corner and view available networks.



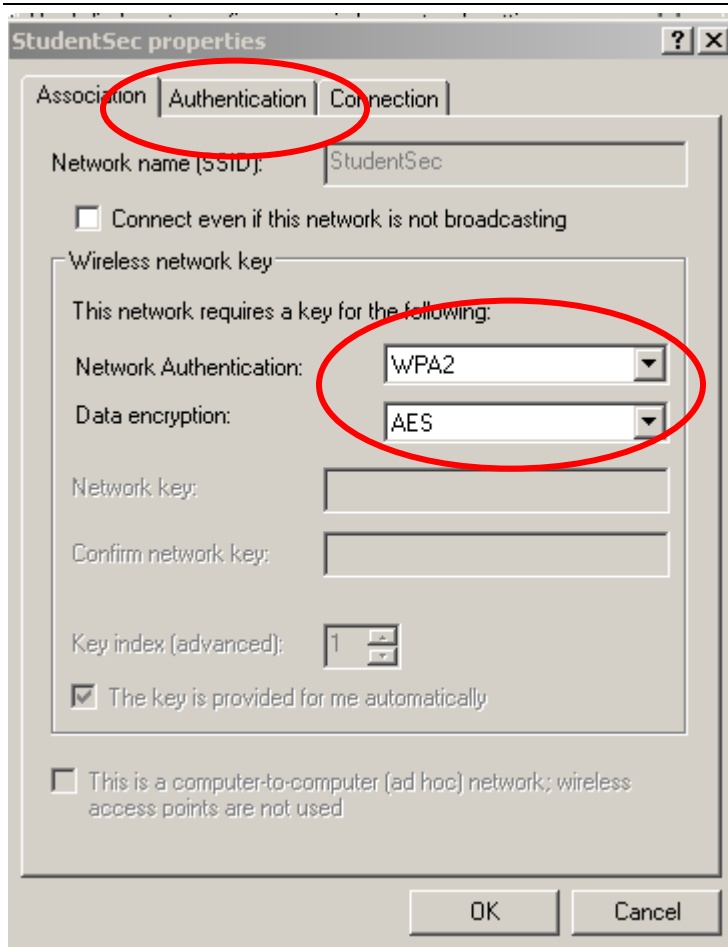
2. Click on StudentSec and connect it will try to connect but won't be able to. There will be a warning in the task bar.
3. Choose Change the order of preferred networks.

Connecting to the Secured Student Wireless Network - Windows XP



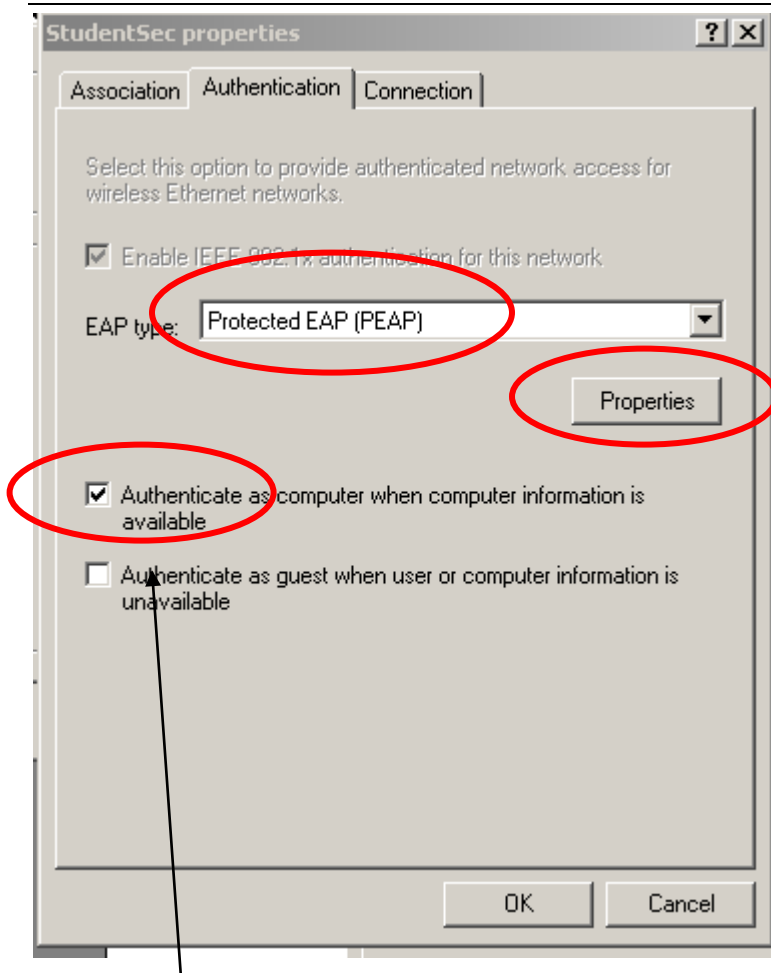
4. Select StudentSec and click on Properties

Connecting to the Secured Student Wireless Network - Windows XP



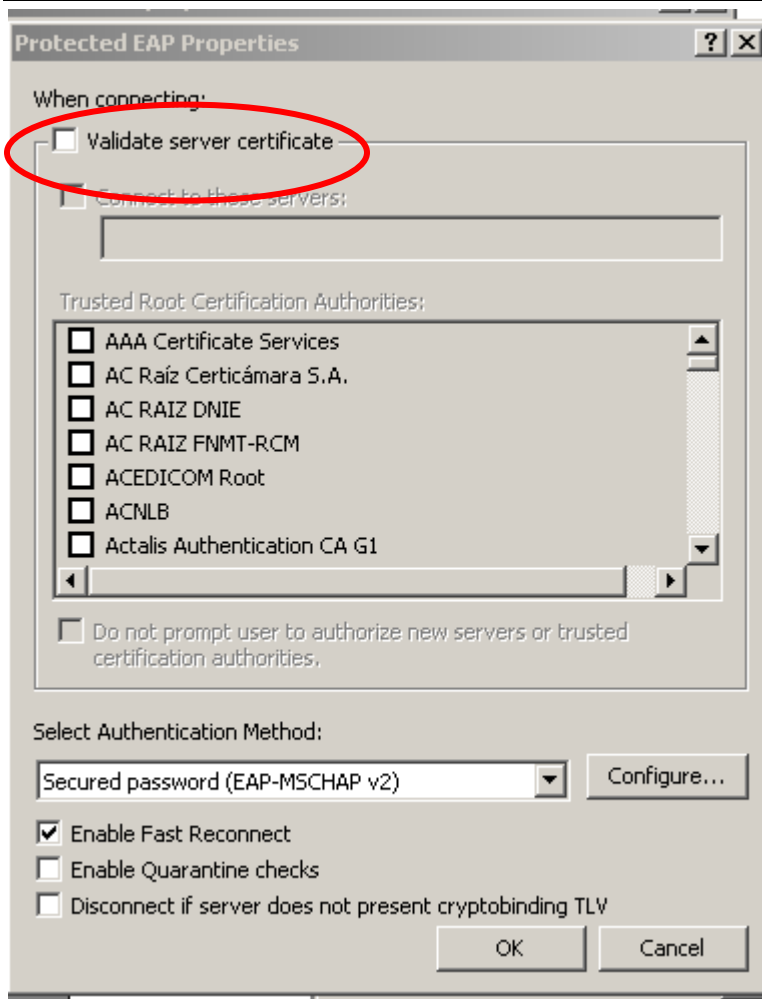
5. The Network Authentication and Data Encryption should already be set.
6. Click on the Authentication tab

Connecting to the Secured Student Wireless Network - Windows XP



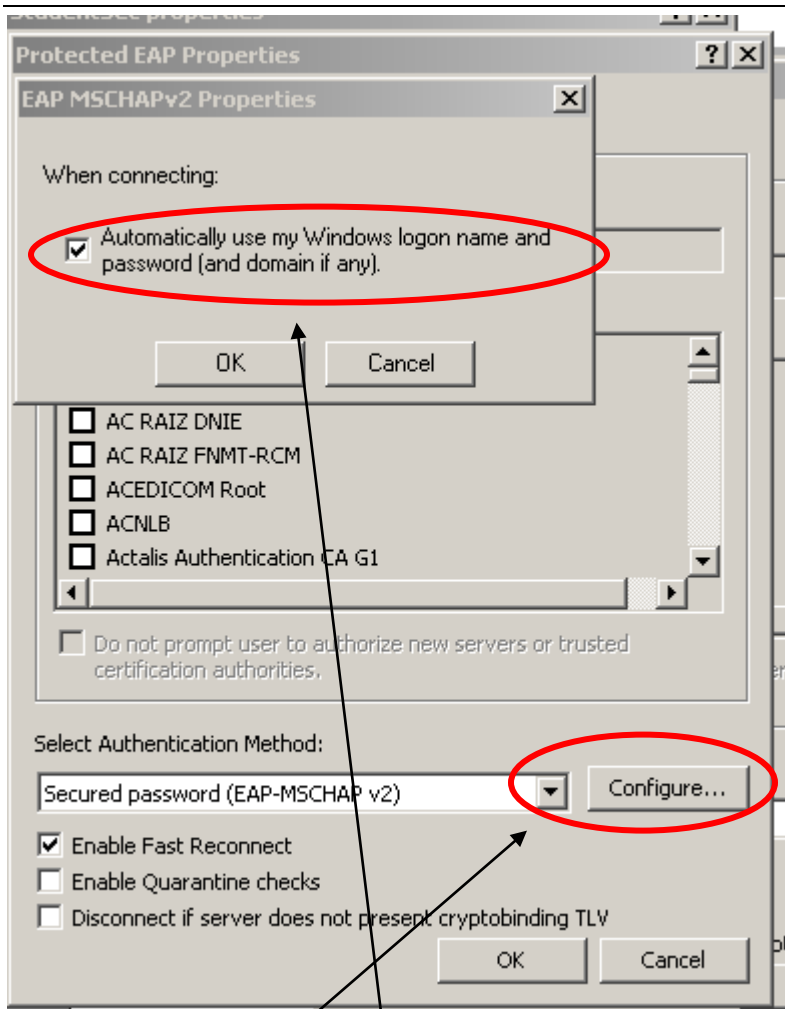
7. Uncheck Authenticate as computer when computer information is available
8. Change EAP to PEAP by clicking on the down arrow and clicking on PEAP
9. Then click on Properties

Connecting to the Secured Student Wireless Network - Windows XP



10. Uncheck the Validate server certificate box at the top

Connecting to the Secured Student Wireless Network - Windows XP



11. Click on Configure and uncheck
12. Automatically use my Windows logon name and password.
13. OK your way out.
14. You will either be prompted for credentials or click on the balloon in the lower right corner to get the login window.

Connecting to the Secured Student Wireless Network - Windows XP



15. Enter the same username and password as you do for email and the domain is Student.

You should now be connected to the secured Staff wireless network.