



## **2009-10 INSTITUTIONAL PROFILE**

---

**Enrollment  
Spring 2010**

## Spring 2010 Enrollment Highlights

Total Enrollment: **2,171**.

- Degree credit enrollment at Goodwin College increased by 39% from spring 2009 and by 61% since spring 2007
- FTE enrollment increased by 86% since spring 2007
- 387 students are attending Goodwin College for the first time
  - 143 are new students, having never previously enrolled at a college or university
  - 244 transferred to Goodwin from another college or university
    - ✓ 54% transferred from a Connecticut Community College
    - ✓ 15% transferred from a public four-year university

Retention

- 82% were enrolled in Fall 2009 (includes 59 students who graduated at the end of the fall semester)
- 78% of students enrolled for the first time in fall 2009 returned in spring 2010
  - ✓ 77% of first-time freshmen
  - ✓ 79% of new transfers-in

Residency

- 99% of Goodwin's students are Connecticut Residents
  - ✓ 42% come from Hartford, East Hartford, New Britain, or Manchester

Status

- 78% of Goodwin's students attend part-time; down from 82% in spring 2009 and 91% in spring 2007. While part-time enrollment increased by 38% since spring 2007, full-time enrollment has increased by over 300%.

Demographics

- 86% are female; this number has declined by only 2% since spring 2007.
- 49% are students of color; the highest spring percentage in four years.
  - The fastest growing group is Hispanic, more than doubling since 2007; Asian/Pacific Islander enrollment increased by 56% and African-American enrollment increased by 40%
- 63% are age 25 and older; the median age is 27
  - Our student body is growing younger, with 37% under 25 compared to 29% just four years ago.
  - The median ages has dropped from 29 to 27
  - The average age has dropped from 31 to 29

Program Enrollment

- 69% of the students are enrolled in associate degree programs
- 28% are enrolled in bachelor's degree programs
- 82% are enrolled in Health Professions and Related Clinical Sciences programs

# Enrollment

Goodwin College

Spring Semester 2005 through 2010

	2007	2008	2009	2010	4-yr Change
<b>Total Enrollment</b>					
Headcount	1,351	1,320	1,558	2,171	61%
FTE	694	717	863	1,298	87%
Credits Generated	10,463	10,751	12,947	19,470	86%
<b>Status</b>					
Full-time	117	195	274	473	304%
Part-time	1,234	1,125	1,284	1,698	38%
Bachelor Degree				610	
Associate Degree	1,249	1,214	1,473	1,490	19%
Certificate	74	97	69	50	-32%
Non-Degree	28	9	16	21	-25%
First-time, FT, Degree Seeking	39	31	33	70	79%
Connecticut Residents	1,341	1,309	1,527	2,145	60%
<b>Gender</b>					
Female	1,184	1,148	1,370	1,866	58%
Male	167	172	188	305	83%
<b>Race/Ethnicity</b>					
Non-resident Alien	0	0	1	0	0%
Black*	423	397	422	591	40%
American Indian*	6	4	6	8	33%
Asian/Pacific Island*	32	32	42	50	56%
Hispanic*	193	193	264	410	112%
White, non-Hispanic	663	655	781	1,079	63%
Unknown	34	39	42	33	-3%
*Percent Students of Color	48%	47%	47%	49%	
<b>Age</b>					
under 18	0	0	0	15	0%
18-19	81	82	129	230	184%
20-21	118	127	140	227	92%
22-24	190	179	251	339	78%
25-29	305	286	335	478	57%
30-34	226	219	228	304	35%
35-39	188	189	212	254	35%
40-44	115	115	126	159	38%
45-49	79	76	70	91	15%
50-59	46	45	62	72	57%
60+	3	2	5	2	-33%
Percent 25 and older	71%	71%	67%	63%	
Median Age	29	29	28	27	
Average Age	30.9	30.8	30.3	29.3	

# Enrollment

Goodwin College

Spring Semester 2005 through 2010

	2007	2008	2009	2010	4-yr Change
<b>Total Enrollment</b>					
Headcount	1,351	1,320	1,558	2,171	61%
FTE	694	717	863	1,298	24%
Credits Generated	10,463	10,751	12,947	19,470	86%
<b>Status</b>					
Full-time	9%	15%	18%	22%	103%
Part-time	91%	85%	82%	78%	-10%
Associate Degree	92%	92%	95%	69%	2%
Certificate	5%	7%	4%	2%	-19%
Non-Degree	2%	1%	1%	1%	-50%
First-time, FT, Degree Seekin	3%	2%	2%	3%	-27%
Connecticut Residents	99%	99%	98%	99%	-1%
<b>Gender</b>					
Female	88%	87%	88%	86%	0%
Male	12%	13%	12%	14%	-2%
<b>Race/Ethnicity</b>					
Non-resident Alien	0.0%	0.0%	0.1%	0.0%	0%
Black*	31%	30%	27%	27%	-13%
American Indian*	0.4%	0.3%	0.4%	0.4%	-13%
Asian/Pacific Island*	2%	2%	3%	2%	14%
Hispanic*	14%	15%	17%	19%	19%
White, non-Hispanic	49%	50%	50%	50%	2%
Unknown	3%	3%	3%	2%	7%
*Percent Students of Color	48%	47%	47%	49%	
<b>Age</b>					
under 18	0%	0%	0%	1%	0%
18-19	6%	6%	8%	11%	38%
20-21	9%	10%	9%	10%	3%
22-24	14%	14%	16%	16%	15%
25-29	23%	22%	22%	22%	-5%
30-34	17%	17%	15%	14%	-13%
35-39	14%	14%	14%	12%	-2%
40-44	9%	9%	8%	7%	-5%
45-49	6%	6%	4%	4%	-23%
50-59	3%	3%	4%	3%	17%
60+	0.2%	0.2%	0.3%	0.1%	45%
Percent 25 and older	71%	71%	67%	63%	
Median Age	29	29	28	27	
Average Age	30.9	30.8	30.3	29.3	

# New Students

Goodwin College

Spring Semester 2005 through 2010

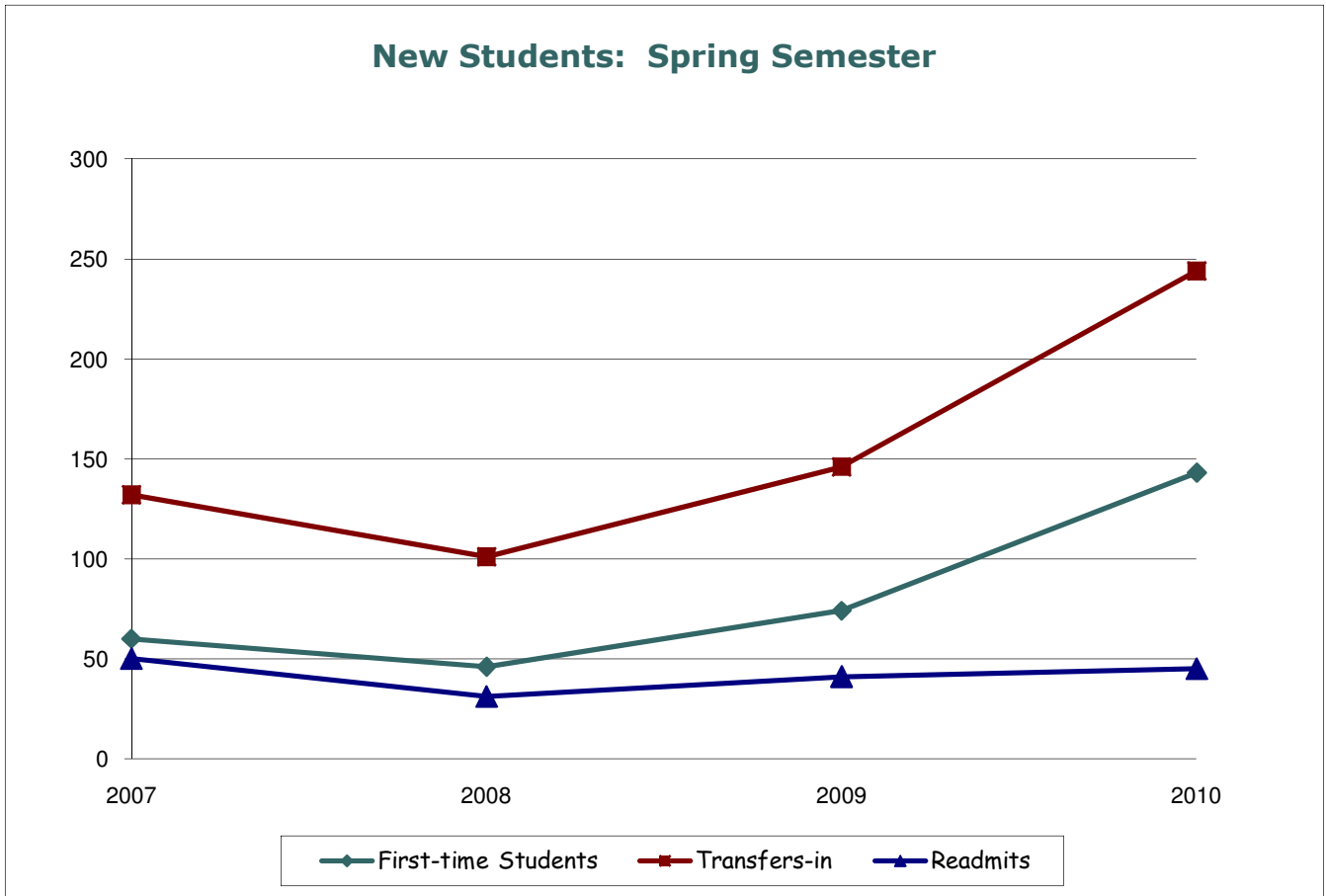
	2007	2008	2009	2010
<b>First-time Students</b>				
Applied*			116	192
Enrolled	60	46	74	143
<b>Transfers-in</b>				
Applied*			201	308
Enrolled	132	101	146	244
<b>Readmits</b>				
Applied			42	47
Enrolled	50	31	41	45
<b>Total Applied*</b>			<b>359</b>	
<b>Total Enrolled</b>	<b>242</b>	<b>178</b>	<b>261</b>	<b>432</b>

\*estimate

**First-time Students** have never attended any college or university

**Transfers-in** attended another college or university before enrolling at Goodwin

**Readmits** are Goodwin students whose last enrollment was more than two semesters ago



# Enrollment by Program and Degree Level

Goodwin College

Spring 2010

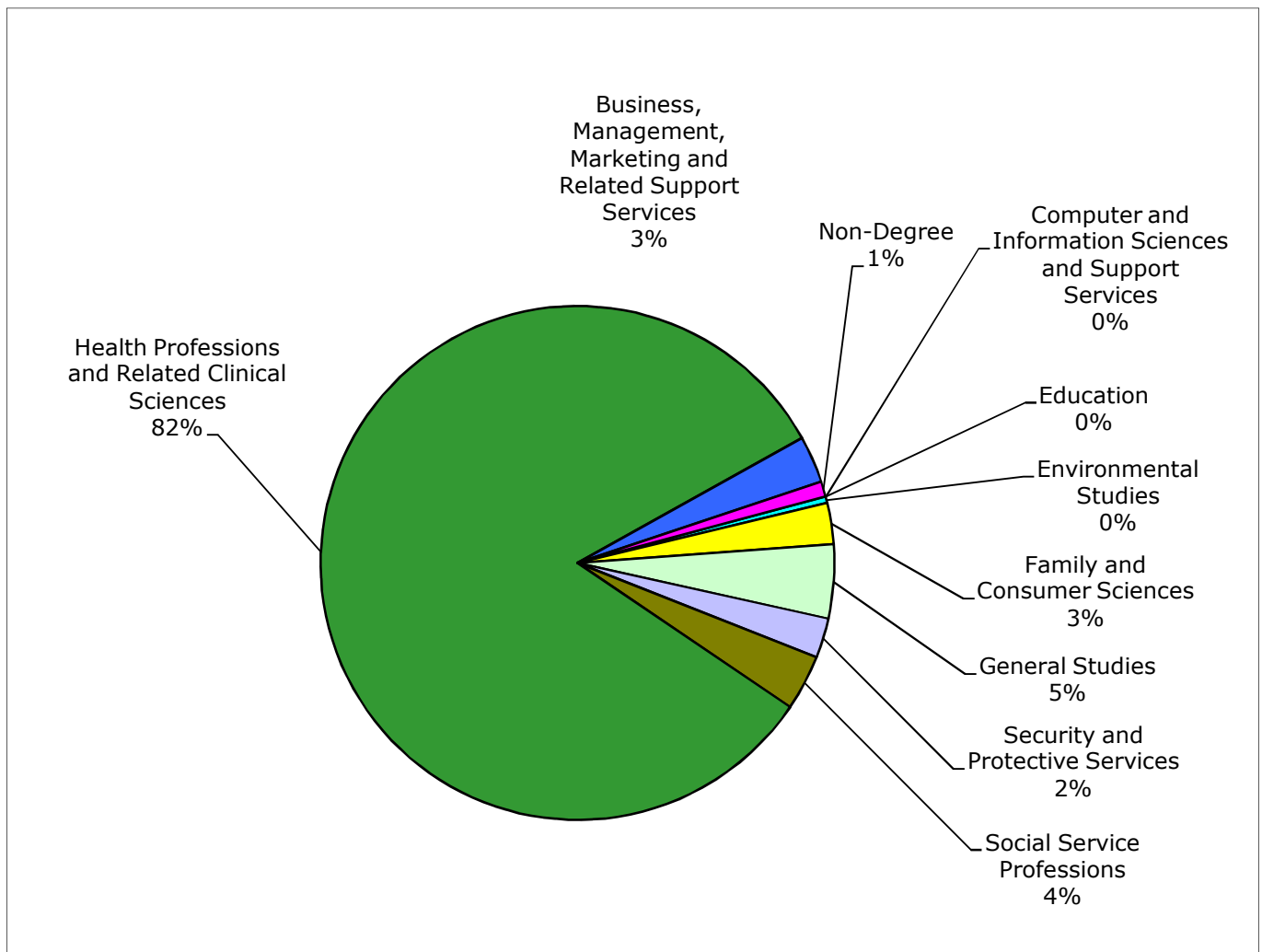
Program Area/Program(s)	Degree Level					Total
	Certificate C2	Certificate C3	Associate Degree	Bachelor Degree	Non- Degree	
<b>Computer and Information Sciences and Support Services</b>						<b>0</b>
Computer Systems Technology	0	0	0	0	0	0
<b>Education</b>						<b>0</b>
Education Paraprofessional	0	0	0	0	0	0
<b>Environmental Studies</b>						<b>9</b>
Environmental Studies	0	0	9	0	0	9
<b>Family and Consumer Sciences</b>						<b>56</b>
Early Childhood Education	0	0	19	37	0	56
Child Development Associate	0	0	0	0	0	0
<b>General Studies</b>						<b>101</b>
General Studies	0	0	101	0	0	101
<b>Security and Protective Services</b>						<b>54</b>
Criminal Justice	0	0	25	0	0	25
Homeland Security	0	0	29	0	0	29
<b>Social Service Professions</b>						<b>76</b>
Human Services	0	0	76	0	0	76
Youth Development	0	0	0	0	0	0
<b>Health Professions and Related Clinical Sciences</b>						<b>1,790</b>
Medical Office	2	0	0	0	0	2
Medical Billing and Coding	14	0	0	0	0	14
Medical Assisting	0	8	90	0	0	98
Paramedic	6	0	0	0	0	6
Respiratory Care	0	0	58	0	0	58
Histotechnician	0	10	0	0	0	10
Phlebotomy	10	0	0	0	0	10
Nursing	0	0	288	18	0	306
Health Sciences	0	0	731	555	0	1286

# Enrollment by Program and Degree Level

Goodwin College

Spring 2010

Program Area/Program(s)	Degree Level					Total
	Certificate C2	Certificate C3	Associate Degree	Bachelor Degree	Non-Degree	
<b>Business, Management, Marketing and Related Support Services</b>						<b>64</b>
Business Studies	0	0	39	0		39
Business Administration	0	0	25	0		25
Customer Service	0	0	0	0		0
Entrepreneurship	0	0	0	0		0
Non-Degree	0	0	0	0	21	<b>21</b>
<b>Total</b>	<b>32</b>	<b>18</b>	<b>1490</b>	<b>610</b>	<b>21</b>	<b>2171</b>



# Connecticut Town of Residence\*

Goodwin College

Spring 2010

BY TOWN	Number	Percent	BY ENROLLMENT	Number	Percent
Andover	4	0.2%	Hartford	359	16.5%
Ansonia	3	0.1%	East Hartford	264	12.2%
Ashford	3	0.1%	Manchester	163	7.5%
Avon	3	0.1%	New Britain	132	6.1%
Beacon Falls	1	0.0%	Vernon	73	3.4%
Berlin	15	0.7%	Bristol	70	3.2%
Bloomfield	62	2.9%	Windsor	68	3.1%
Bolton	4	0.2%	Bloomfield	62	2.9%
Branford	1	0.0%	Newington	52	2.4%
Bridgeport	4	0.2%	West Hartford	49	2.3%
Bristol	70	3.2%	Middletown	46	2.1%
Burlington	1	0.0%	Waterbury	46	2.1%
Canterbury	1	0.0%	Meriden	44	2.0%
Chaplin	1	0.0%	Glastonbury	39	1.8%
Cheshire	2	0.1%	South Windsor	37	1.7%
Clinton	1	0.0%	Wethersfield	34	1.6%
Colchester	22	1.0%	Enfield	31	1.4%
Columbia	6	0.3%	Ellington	28	1.3%
Coventry	26	1.2%	Coventry	26	1.2%
Cromwell	22	1.0%	Rocky Hill	26	1.2%
Danbury	2	0.1%	Tolland	26	1.2%
Derby	2	0.1%	Wallingford	25	1.2%
Durham	2	0.1%	Southington	23	1.1%
East Granby	7	0.3%	Colchester	22	1.0%
East Haddam	4	0.2%	Cromwell	22	1.0%
East Hampton	15	0.7%	Plainville	22	1.0%
East Hartford	264	12.2%	Windsor Locks	19	0.9%
East Haven	4	0.2%	Berlin	15	0.7%
East Windsor	11	0.5%	East Hampton	15	0.7%
Ellington	28	1.3%	Granby	15	0.7%
Enfield	31	1.4%	Simsbury	15	0.7%
Farmington	10	0.5%	Hebron	14	0.6%
Glastonbury	39	1.8%	Windham	12	0.6%
Granby	15	0.7%	East Windsor	11	0.5%
Groton	3	0.1%	Suffield	11	0.5%
Guilford	1	0.0%	Farmington	10	0.5%
Haddam	2	0.1%	Hamden	10	0.5%
Hamden	10	0.5%	Somers	9	0.4%
Hampton	1	0.0%	Stafford	9	0.4%
Hartford	359	16.5%	Mansfield	8	0.4%

# Connecticut Town of Residence\*

Goodwin College

Spring 2010

BY TOWN	Number	Percent	BY ENROLLMENT	Number	Percent
Harwinton	4	0.2%	East Granby	7	0.3%
Hebron	14	0.6%	Plymouth	7	0.3%
Killingworth	2	0.1%	Wolcott	7	0.3%
Lebanon	4	0.2%	Columbia	6	0.3%
Lisbon	1	0.0%	New Haven	6	0.3%
Madison	2	0.1%	Torrington	6	0.3%
Manchester	163	7.5%	Unionville	6	0.3%
Mansfield	8	0.4%	Marlborough	5	0.2%
Marlborough	5	0.2%	Naugatuck	5	0.2%
Meriden	44	2.0%	Norwich	5	0.2%
Middlebury	1	0.0%	Portland	5	0.2%
Middlefield	3	0.1%	Andover	4	0.2%
Middletown	46	2.1%	Bolton	4	0.2%
Milford	1	0.0%	Bridgeport	4	0.2%
Montville	4	0.2%	East Haddam	4	0.2%
Naugatuck	5	0.2%	East Haven	4	0.2%
New Britain	132	6.1%	Harwinton	4	0.2%
New Haven	6	0.3%	Lebanon	4	0.2%
New London	2	0.1%	Montville	4	0.2%
Newington	52	2.4%	West Haven	4	0.2%
Newtown	1	0.0%	Willington	4	0.2%
North Branford	3	0.1%	Ansonia	3	0.1%
North Haven	2	0.1%	Ashford	3	0.1%
Norwich	5	0.2%	Avon	3	0.1%
Old Lyme	1	0.0%	Groton	3	0.1%
Old Saybrook	1	0.0%	Middlefield	3	0.1%
Orange	2	0.1%	North Branford	3	0.1%
Oxford	2	0.1%	Prospect	3	0.1%
Plainfield	1	0.0%	Winchester	3	0.1%
Plainville	22	1.0%	Cheshire	2	0.1%
Plymouth	7	0.3%	Danbury	2	0.1%
Portland	5	0.2%	Derby	2	0.1%
Prospect	3	0.1%	Durham	2	0.1%
Redding	1	0.0%	Haddam	2	0.1%
Rocky Hill	26	1.2%	Killingworth	2	0.1%
Salem	1	0.0%	Madison	2	0.1%
Salisbury	1	0.0%	New London	2	0.1%
Seymour	1	0.0%	North Haven	2	0.1%
Simsbury	15	0.7%	Orange	2	0.1%
Somers	9	0.4%	Oxford	2	0.1%

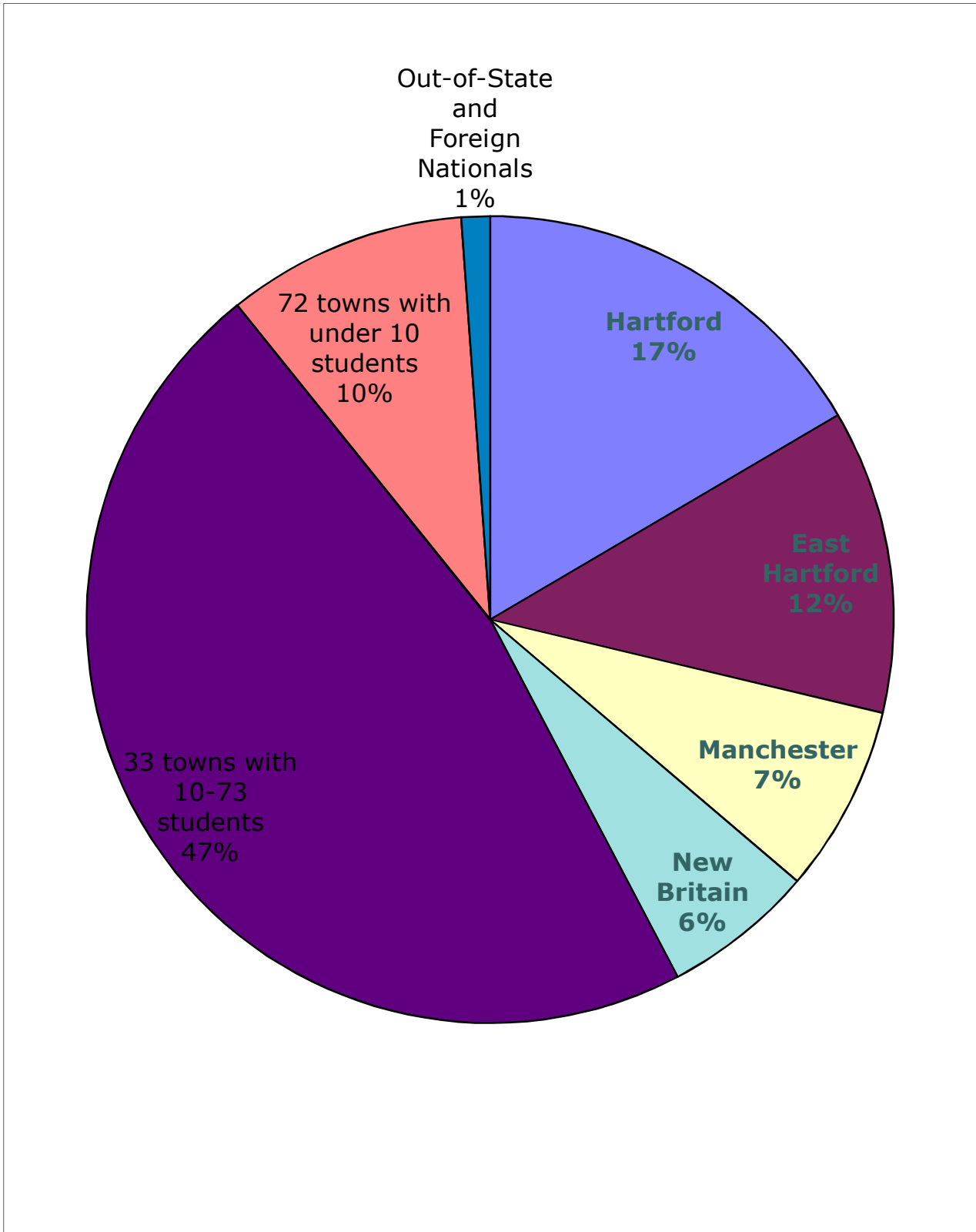
# Connecticut Town of Residence\*

Goodwin College

Spring 2010

BY TOWN	Number	Percent	BY ENROLLMENT	Number	Percent
South Windsor	37	1.7%	Southbury	2	0.1%
Southbury	2	0.1%	Sprague	2	0.1%
Southington	23	1.1%	Westbrook	2	0.1%
Sprague	2	0.1%	Beacon Falls	1	0.0%
Stafford	9	0.4%	Branford	1	0.0%
Stamford	1	0.0%	Burlington	1	0.0%
Stratford	1	0.0%	Canterbury	1	0.0%
Suffield	11	0.5%	Chaplin	1	0.0%
Thomaston	1	0.0%	Clinton	1	0.0%
Tolland	26	1.2%	Guilford	1	0.0%
Torrington	6	0.3%	Hampton	1	0.0%
Trumbull	1	0.0%	Lisbon	1	0.0%
Unionville	6	0.3%	Middlebury	1	0.0%
Vernon	73	3.4%	Milford	1	0.0%
Wallingford	25	1.2%	Newtown	1	0.0%
Waterbury	46	2.1%	Old Lyme	1	0.0%
Waterford	1	0.0%	Old Saybrook	1	0.0%
Watertown	1	0.0%	Plainfield	1	0.0%
West Hartford	49	2.3%	Redding	1	0.0%
West Haven	4	0.5%	Salem	1	0.0%
Westbrook	2	0.1%	Salisbury	1	0.0%
Wethersfield	34	1.6%	Seymour	1	0.0%
Willington	4	0.2%	Stamford	1	0.0%
Winchester	3	0.1%	Stratford	1	0.0%
Windham	12	0.6%	Thomaston	1	0.0%
Windsor	68	3.1%	Trumbull	1	0.0%
Windsor Locks	19	0.9%	Waterford	1	0.0%
Wolcott	7	0.3%	Watertown	1	0.0%
Woodbury	1	0.0%	Woodbury	1	0.0%
<b>TL CT</b>	<b>2,145</b>	<b>98.8%</b>	<b>TL CT</b>	<b>2,145</b>	<b>98.8%</b>
Out-of-State and NRA	26	1.2%	Out-of-State and NRA	26	1.2%
<b>TL ENR</b>	<b>2,171</b>		<b>TL ENR</b>	<b>2,171</b>	
* Tax Town			* Tax Town		

# Connecticut Town of Residence



# Transfers from Other Institutions

Goodwin College

Spring Semester 2005 through 2010

	2007	2008	2009	2010
<b>CONNECTICUT INSTITUTIONS</b>	<b>64</b>	<b>80</b>	<b>115</b>	<b>176</b>
<b>Public Four-Year Institutions</b>	<b>12</b>	<b>21</b>	<b>22</b>	<b>40</b>
University of Connecticut	3	4	5	8
Central Connecticut State University	4	11	9	13
Eastern Connecticut State University	0	3	4	7
Southern Connecticut State University	3	2	1	8
Western Connecticut State University	1	1	0	2
Charter Oak State College	1	0	3	2
U.S. Coast Guard Academy	0	0	0	0
<b>Community Colleges</b>	<b>48</b>	<b>55</b>	<b>79</b>	<b>118</b>
Asnuntuck	3	2	3	7
Capital	17	16	26	31
Gateway	5	3	4	3
Housatonic	0	0	1	5
Manchester	11	12	27	32
Middlesex	2	2	3	8
Naugatuck Valley	5	5	3	9
Northwestern	0	1	1	2
Norwalk	0	0	0	0
Quinebaug Valley	2	1	3	1
Three Rivers	0	2	1	4
Tunxis	3	11	7	16
<b>Independent Institutions</b>	<b>4</b>	<b>4</b>	<b>14</b>	<b>18</b>
Albertus Magnus College	0	1	1	4
Briarwood College	0	1	0	5
Connecticut College	0	0	0	0
Fairfield University	0	0	0	0
Gibbs College	0	0	1	0
Goodwin College	0	0	0	0
Hartford Seminary	0	0	0	0
Holy Apostles College	0	0	0	0
Int. College of Hospitality Mang.	0	0	0	0
Lyme Academy of Fine Arts	0	0	0	0
Mitchell College	0	0	0	0
Paier College of Art, Inc.	0	0	0	0
Quinnipiac University	1	1	1	0
Rensselaer at Hartford	0	0	0	0

# Transfers from Other Institutions

Goodwin College

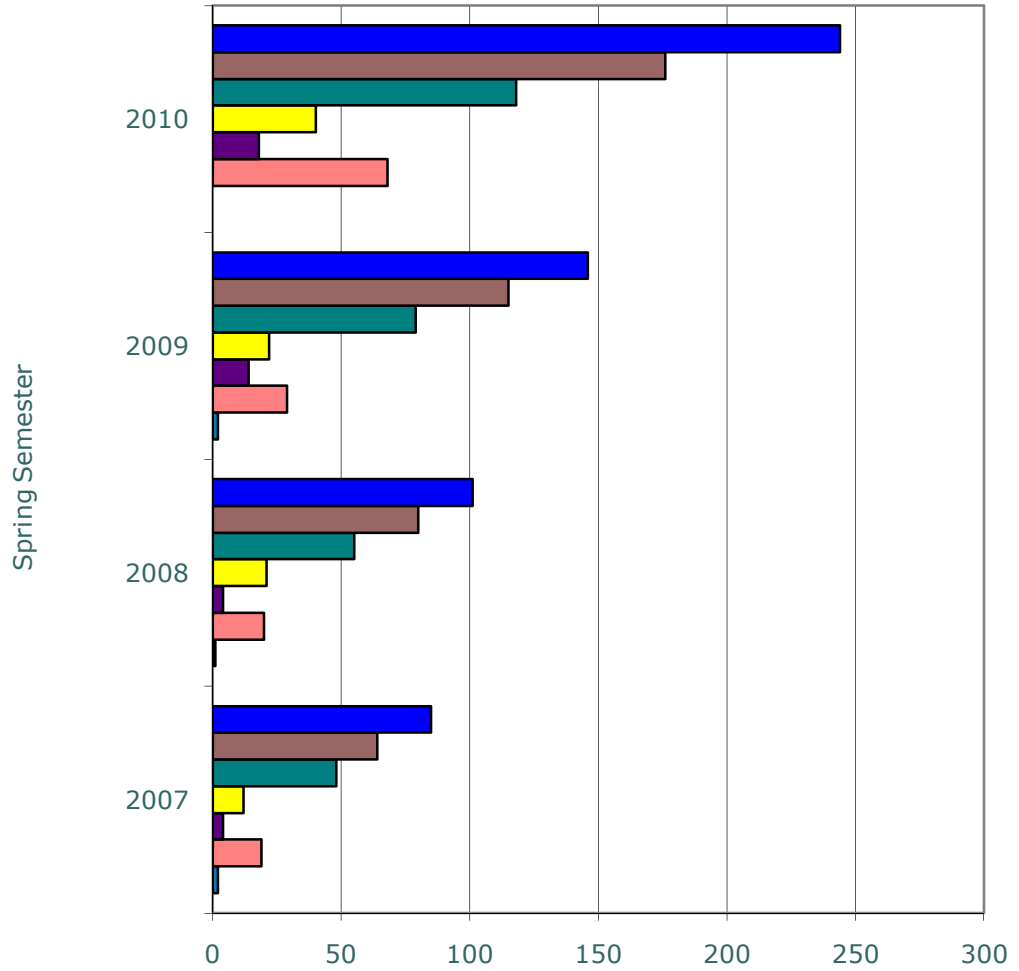
Spring Semester 2005 through 2010

	2007	2008	2009	2010
<b>Independent Institutions, cont.</b>				
Sacred Heart University	0	0	0	0
St. Basil College	0	0	0	0
St. Joseph College	0	1	4	4
St. Thomas Seminary	0	0	0	0
St. Vincent's College	1	0	0	0
Teikyo Post University	2	0	2	1
Trinity College	0	0	0	1
University of Bridgeport	0	0	1	1
University of Hartford	0	0	4	0
University of New Haven	0	0	0	2
Wesleyan University	0	0	0	0
Yale University	0	0	0	0
<b>OUT-OF-STATE</b>	<b>19</b>	<b>20</b>	<b>29</b>	<b>68</b>
Two-Year Public Institution	5	8	7	14
Two-Year Independent Institution	5	4	3	0
Four-Year Public Institution	0	0	3	14
Four-Year Independent Institution	9	8	14	40
Type of Institution Unknown	0	0	2	0
PREVIOUS INSTITUTION UNKNOWN	2	1	2	0
<b>TOTAL, ALL INSTITUTIONS</b>	<b>85</b>	<b>101</b>	<b>146</b>	<b>244</b>

# Transfers from Other Institutions

Goodwin College

Spring Semester 2005 through 2010



	2007	2008	2009	2010
■ TOTAL, ALL INSTITUTIONS	85	101	146	244
■ CONNECTICUT INSTITUTIONS	64	80	115	176
■ Community Colleges	48	55	79	118
■ Public Four-Year Institutions	12	21	22	40
■ Independent Institutions	4	4	14	18
■ OUT-OF-STATE	19	20	29	68
■ PREVIOUS INSTITUTION UNKNOWN	2	1	2	0