



# GOODWIN COLLEGE

**2008-09 FACTBOOK**

---

# Enrollment

Goodwin College

Fall Semester 2004 through 2008

	2004	2005	2006	2007	2008	5-yr Change
<b>Total Enrollment</b>						
Headcount	940	1,219	1,365	1,440	1,589	69%
FTE	550	633	735	770	901	42%
<b>Status</b>						
Full-time	145	132	157	197	324	123%
Part-time	795	1,087	1,208	1,243	1,265	59%
Associate Degree	na	na	1269	1,279	1,475	16%
Certificate	na	na	80	140	97	21%
Non-Degree	9	58	16	21	17	89%
First-time, FT, Degree Seeking	77	51	66	104	160	108%
Connecticut Residents	936	1,212	1,356	1,426	1567	67%
<b>Gender</b>						
Female	810	1,087	1,190	1,261	1,388	71%
Male	130	132	175	179	201	55%
<b>Race/Ethnicity</b>						
Non-resident Alien	0	0	0	1	1	N/A
Black*	261	367	451	456	434	66%
American Indian*	6	5	4	6	5	-17%
Asian/Pacific Island*	18	15	30	38	38	111%
Hispanic*	145	172	208	224	267	84%
White, non-Hispanic	415	574	664	678	799	93%
Unknown	95	86	8	37	45	-53%
*Percent Students of Color	45.7%	45.9%	50.8%	50.3%	46.8%	2%
<b>Age</b>						
under 18	7	17	10	0	14	100%
18-19	54	62	97	89	146	170%
20-21	97	104	115	131	160	65%
22-24	154	187	197	212	247	60%
25-29	210	265	288	307	328	56%
30-34	155	217	248	233	223	44%
35-39	109	144	172	200	213	95%
40-44	63	119	118	126	127	102%
45-49	54	60	69	80	67	24%
50-59	36	36	48	59	60	67%
60+	1	8	3	2	4	300%
Percent 25 and older	66.8%	69.6%	69.3%	69.9%	64.3%	-4%
Median Age				30	28	
<b>Retention</b>						
From Previous Fall FT Cohort	66	55	53	na	49	
From Previous Fall PT Cohort	59	50	56	na	48	

# Enrollment

Goodwin College

Fall Semester 2005 through 2008

	2004	2005	2006	2007	2008	5-yr Change
<b>Total Enrollment</b>						
Headcount	940	1,219	1,365	1,440	1,589	69%
FTE	550	633	633	735	901	42%
<b>Status</b>						
Full-time	15.4%	10.8%	9.7%	11.5%	13.7%	123%
Part-time	84.6%	10.8%	11.5%	13.7%	20.4%	59%
Associate Degree	na	na	93.0%	88.8%	92.8%	16%
Certificate	na	na	5.9%	9.7%	6.1%	21%
Non-Degree	1.0%	4.8%	4.2%	1.1%	1.3%	89%
First-time, FT, Degree Seeking	8.2%	4.2%	4.8%	7.2%	10.1%	108%
Connecticut Residents	99.6%	99.4%	99.3%	99.0%	98.6%	67%
<b>Gender</b>						
Female	86.2%	89.2%	87.2%	87.6%	87.4%	71%
Male	13.8%	10.8%	12.8%	12.4%	12.6%	55%
<b>Race/Ethnicity</b>						
Non-resident Alien	0.0%	0.0%	0.0%	0.1%	0.1%	N/A
Black*	27.8%	30.1%	33.0%	31.7%	27.3%	66%
American Indian*	0.6%	0.4%	0.3%	0.4%	0.3%	-17%
Asian/Pacific Island*	1.9%	1.2%	2.2%	2.6%	2.4%	111%
Hispanic*	15.4%	14.1%	12.6%	14.4%	14.1%	84%
White, non-Hispanic	44.1%	47.1%	48.6%	47.1%	50.3%	93%
Unknown	10.1%	7.1%	0.6%	2.6%	2.8%	-52.6%
*Percent Students of Color	45.7%	45.9%	50.8%	50.3%	46.8%	2%
<b>Age</b>						
under 18	0.7%	1.4%	0.7%	0.0%	0.9%	100.0%
18-19	5.7%	5.1%	7.1%	6.2%	9.2%	170%
20-21	10.3%	8.5%	8.4%	9.1%	10.1%	65%
22-24	16.4%	15.3%	14.4%	14.7%	15.5%	60.4%
25-29	22.3%	21.7%	21.1%	21.3%	20.6%	56%
30-34	16.5%	17.8%	18.2%	16.2%	14.0%	44%
35-39	11.6%	11.8%	12.6%	13.9%	13.4%	95%
40-44	6.7%	9.8%	8.6%	8.8%	8.0%	102%
45-49	5.7%	4.9%	5.1%	5.6%	4.2%	24%
50-59	3.8%	3.0%	3.5%	4.1%	3.8%	67%
60+	0.1%	0.7%	0.2%	0.1%	0.3%	300%
Percent 25 and older	66.8%	69.6%	69.3%	69.9%	64.3%	-4%
Median Age				30	28	
<b>Retention</b>						
From Previous Fall FT Cohort	66	55	53	na	49	
From Previous Fall PT Cohort	59	50	56	na	48	

# New Students

Goodwin College

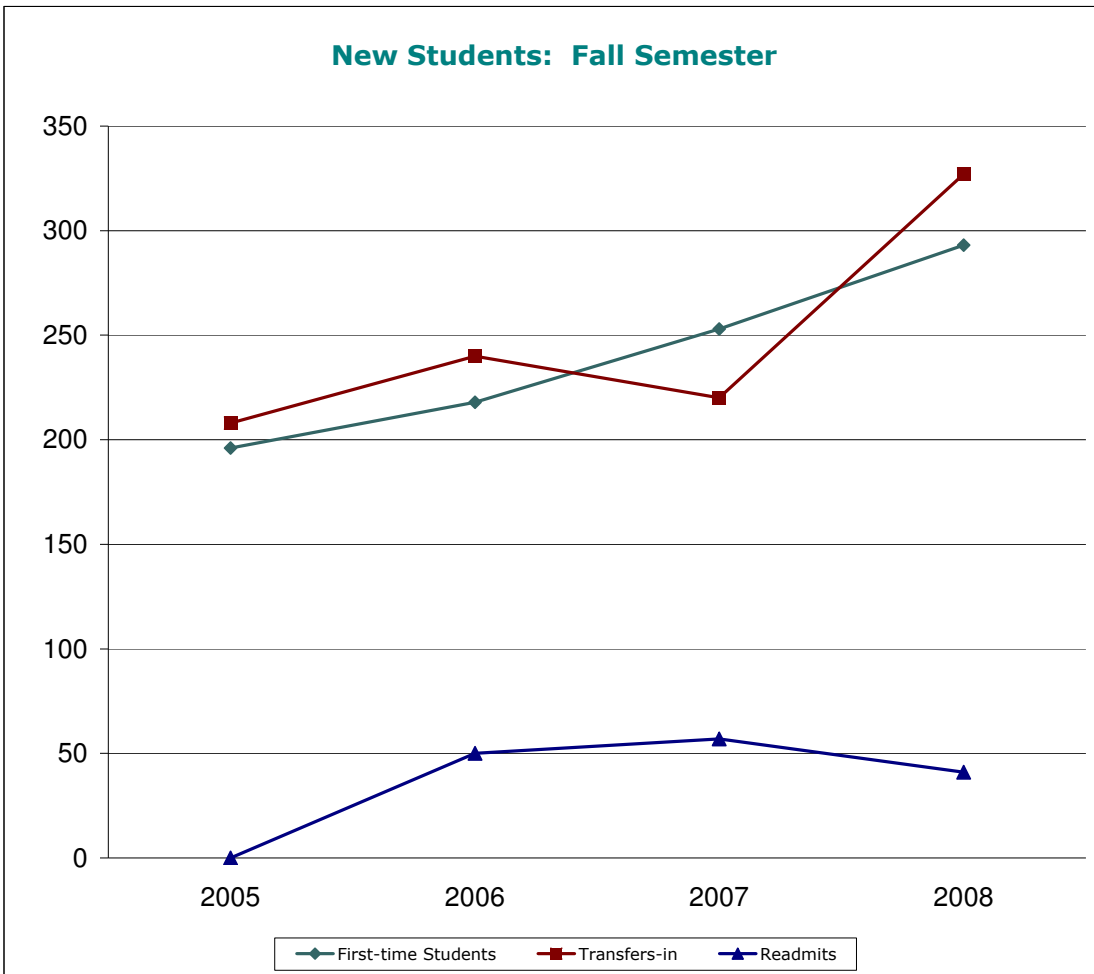
Fall Semester 2004 through 2008

	2004	2005	2006	2007	2008
<b>First-time Students</b>					
Applied*				396	394
Enrolled	302	196	218	253	293
	<i>*estimate</i>				
<b>Transfers-in</b>					
Applied*				593	456
Enrolled	195	208	240	220	327
	<i>*estimate</i>				
<b>Readmits</b>					
Applied					
Enrolled	na	na	50	57	41

**First-time Students** have never attended any college or university and also include first time in Summer semester

**Transfers-in** attended another college or university before enrolling at Goodwin

**Readmits** are Goodwin students whose last enrollment was more than two semesters ago



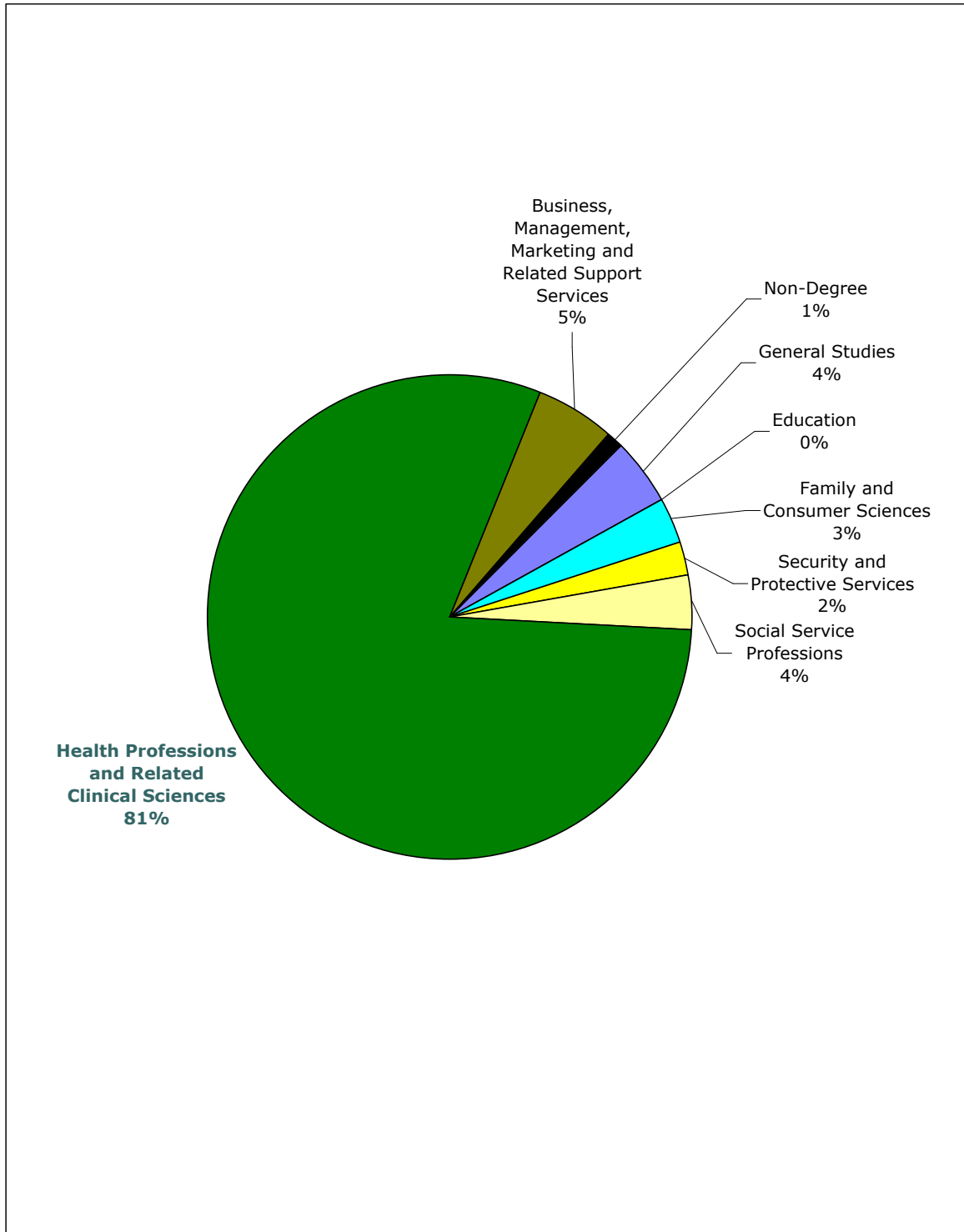
## Enrollment by Program and Degree Level

Goodwin College

Fall 2008

Program Area/Program(s)	Degree Level				Total
	Certificate C2	Certificate C3	Associate Degree	Non- Degree	
<b>Education</b>					<b>1</b>
Education Paraprofessional	1	0	0	0	1
<b>Family and Consumer Sciences</b>					<b>50</b>
Early Childhood Education	4	0	43	0	47
Child Development Associate	3	0	0	0	3
<b>General Studies</b>			70		<b>70</b>
<b>Security and Protective Services</b>					<b>32</b>
Homeland Security	0	0	32	0	32
<b>Social Service Professions</b>					<b>60</b>
Human Services	0	0	59	0	59
Youth Development	0	1	0	0	1
<b>Health Professions and Related Clinical Sciences</b>					<b>1,276</b>
Medical Office	3	0	0	0	3
Medical Billing and Coding	10	0	0	0	10
Medical Assisting	0	9	53	0	62
Paramedic	22	0	0	0	22
Respiratory Care	0	0	42	0	42
Histotechnician	0	4	0	0	4
Phlebotomy	13	0	0	0	13
Nursing	0	0	272	0	272
Health Sciences	0	0	848	0	848
<b>Business, Management, Marketing and Related Support Services</b>					<b>83</b>
Business Studies	0	0	57	0	57
Office Technology	1	0	0	0	1
Applied Org Skills--Bus/Hlthcare	0	0	0	0	0
Customer Service	25	0	0	0	25
Entrepreneurship	0	0	0	0	0
<b>Non-Degree</b>	0	0	0	17	<b>17</b>
<b>Total</b>	<b>82</b>	<b>14</b>	<b>1476</b>	<b>17</b>	<b>1589</b>

# Enrollment by Program Area



## Connecticut Town of Residence\*

Goodwin College

Fall 2008

BY TOWN	Number	Percent	BY ENROLLMENT	Number	Percent
Andover	2	0.1%	Hartford	220	15.3%
Ansonia	1	0.1%	East Hartford	198	13.8%
Ashford	1	0.1%	New Britain	104	7.2%
Avon	3	0.2%	Manchester	103	7.2%
Barkhamsted	1	0.1%	Bloomfield	55	3.8%
Berlin	12	0.8%	Windsor	54	3.8%
Bethel	1	0.1%	Waterbury	43	3.0%
Bloomfield	55	3.8%	Vernon	42	2.9%
Bolton	7	0.5%	Middletown	40	2.8%
Bozrah	1	0.1%	West Hartford	40	2.8%
Branford	3	0.2%	Bristol	35	2.4%
Bridgeport	1	0.1%	Meriden	31	2.2%
Bristol	35	2.4%	Newington	30	2.1%
Brookfield	1	0.1%	South Windsor	29	2.0%
Brooklyn	1	0.1%	Wethersfield	21	1.5%
Burlington	3	0.2%	Enfield	20	1.4%
Canaan	1	0.1%	Southington	19	1.3%
Canton	1	0.1%	Windsor Locks	18	1.3%
Chaplin	1	0.1%	Glastonbury	17	1.2%
Cheshire	2	0.1%	Rocky Hill	17	1.2%
Colchester	10	0.7%	Ellington	16	1.1%
Colebrook	1	0.1%	Tolland	14	1.0%
Columbia	1	0.1%	Berlin	12	0.8%
Coventry	12	0.8%	Coventry	12	0.8%
Cromwell	10	0.7%	Wallingford	11	0.8%
Durham	3	0.2%	Colchester	10	0.7%
East Granby	7	0.5%	Cromwell	10	0.7%
East Haddam	2	0.1%	Naugatuck	10	0.7%
East Hampton	7	0.5%	East Windsor	9	0.6%
East Hartford	198	13.8%	Farmington	9	0.6%
East Lyme	1	0.1%	Granby	8	0.6%
East Windsor	9	0.6%	Plainville	8	0.6%
Ellington	16	1.1%	Torrington	8	0.6%
Enfield	20	1.4%	Bolton	7	0.5%
Essex	2	0.1%	East Granby	7	0.5%
Farmington	9	0.6%	East Hampton	7	0.5%
Glastonbury	17	1.2%	New Haven	7	0.5%
Granby	8	0.6%	Simsbury	7	0.5%
Haddam	2	0.1%	Willington	7	0.5%
Hamden	2	0.1%	Hebron	6	0.4%
Hartford	220	15.3%	Stafford	5	0.3%
Hartland	1	0.1%	Windham	5	0.3%
Harwinton	1	0.1%	Portland	4	0.3%
Hebron	6	0.4%	Somers	4	0.3%
Lebanon	2	0.1%	Avon	3	0.2%
Ledyard	1	0.1%	Branford	3	0.2%
Lisbon	1	0.1%	Burlington	3	0.2%

## Connecticut Town of Residence\*

Goodwin College

Fall 2008

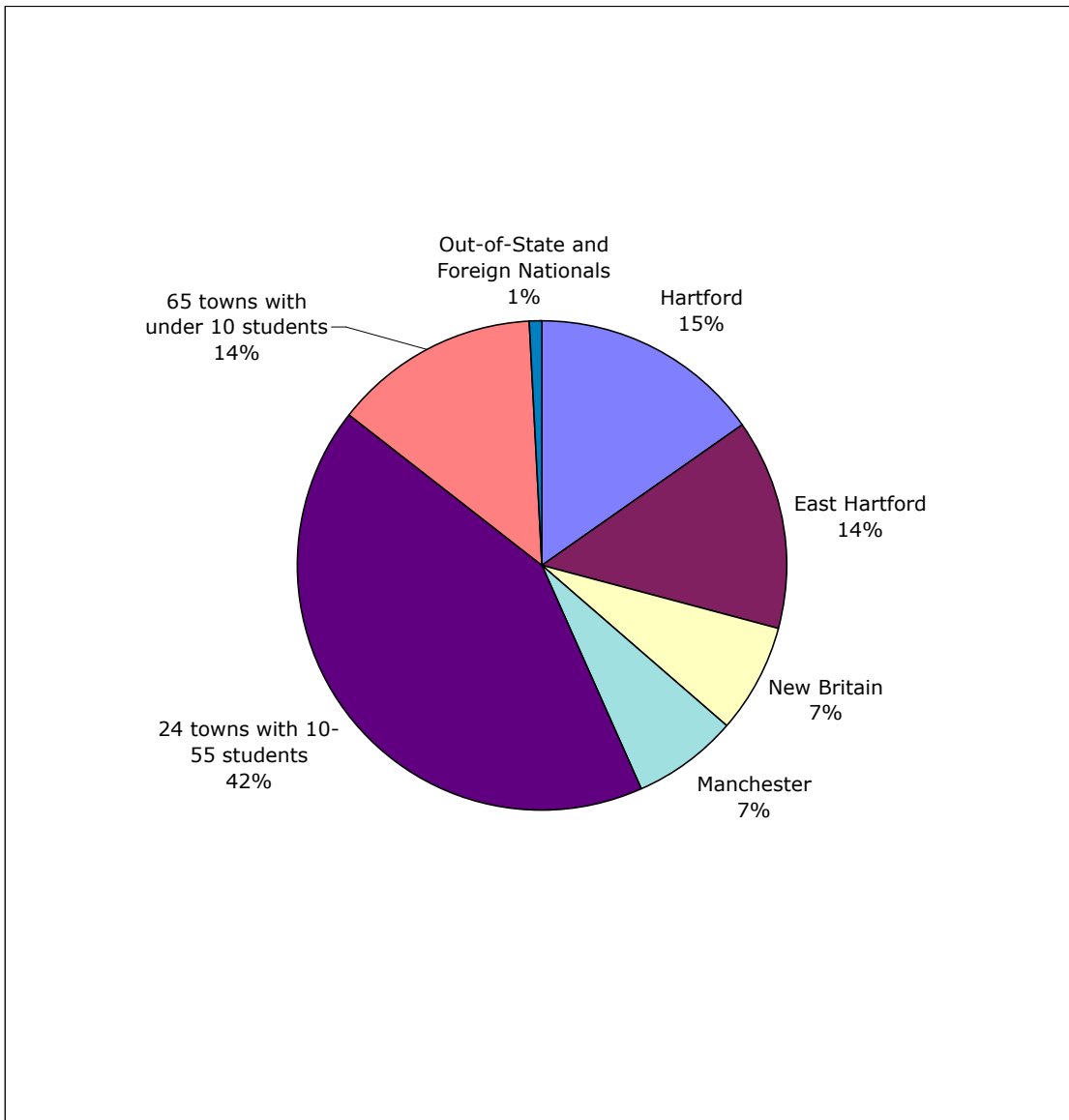
BY TOWN	Number	Percent	BY ENROLLMENT	Number	Percent
Marlboro	2	0.1%	Thomaston	3	0.2%
Meriden	31	2.2%	West Haven	3	0.2%
Middlebury	2	0.1%	Andover	2	0.1%
Middlefield	1	0.1%	Cheshire	2	0.1%
Middletown	40	2.8%	East Haddam	2	0.1%
Milford	1	0.1%	Essex	2	0.1%
Naugatuck	10	0.7%	Haddam	2	0.1%
New Britain	104	7.2%	Hamden	2	0.1%
New Hartford	2	0.1%	Lebanon	2	0.1%
New Haven	7	0.5%	Marlboro	2	0.1%
Newington	30	2.1%	Middlebury	2	0.1%
Newtown	1	0.1%	New Hartford	2	0.1%
North Branford	1	0.1%	Plymouth	2	0.1%
North Haven	3	0.2%	Suffield	2	0.1%
Norwich	3	0.2%	Thompson	2	0.1%
Old Saybrook	1	0.1%	Winchester	2	0.1%
Plainfield	1	0.1%	Ansonia	1	0.1%
Plainville	8	0.6%	Ashford	1	0.1%
Plymouth	2	0.1%	Barkhamsted	1	0.1%
Portland	4	0.3%	Bethel	1	0.1%
Prospect	1	0.1%	Bozrah	1	0.1%
Rocky Hill	17	1.2%	Bridgeport	1	0.1%
Roxbury	1	0.1%	Brookfield	1	0.1%
Salem	1	0.1%	Brooklyn	1	0.1%
Salisbury	1	0.1%	Canaan	1	0.1%
Scotland	1	0.1%	Canton	1	0.1%
Shelton	1	0.1%	Chaplin	1	0.1%
Simsbury	7	0.5%	Colebrook	1	0.1%
Somers	4	0.3%	Columbia	1	0.1%
South Windsor	29	2.0%	East Lyme	1	0.1%
Southington	19	1.3%	Hartland	1	0.1%
Sprague	1	0.1%	Harwinton	1	0.1%
Stafford	5	0.3%	Ledyard	1	0.1%
Stratford	1	0.1%	Lisbon	1	0.1%
Suffield	2	0.1%	Litchfield	1	0.1%
Thomaston	3	0.2%	Mansfield	1	0.1%
Thompson	2	0.1%	Middlefield	1	0.1%
Tolland	14	1.0%	Milford	1	0.1%
Torrington	8	0.6%	Newtown	1	0.1%
Vernon	42	2.9%	North Branford	1	0.1%
Wallingford	11	0.8%	Old Saybrook	1	0.1%
Waterbury	43	3.0%	Plainfield	1	0.1%
Waterford	1	0.1%	Prospect	1	0.1%
West Hartford	40	2.8%	Roxbury	1	0.1%
West Haven	3	0.2%	Salem	1	0.1%
Wethersfield	21	1.5%	Salisbury	1	0.1%
Willington	7	0.5%	Scotland	1	0.1%

# Connecticut Town of Residence\*

Goodwin College

Fall 2008

BY TOWN	Number	Percent	BY ENROLLMENT	Number	Percent
Winchester	2	0.1%	Shelton	1	0.1%
Windham	5	0.3%	Sprague	1	0.1%
Windsor	54	3.8%	Stratford	1	0.1%
Windsor Locks	18	1.3%	Waterford	1	0.1%
<b>TL CT</b>	<b>1,426</b>	<b>99.0%</b>	<b>TL CT</b>	<b>1,426</b>	<b>99.0%</b>
Out-of-State/Foreign Nationals	14	1.0%	Out-of-State/Foreign Nationals	14	1.0%
<b>TL ENR</b>	<b>1,440</b>		<b>TL ENR</b>	<b>1,440</b>	
* Tax Town			* Tax Town		



## Transfers from Other Institutions

Goodwin College

Fall Semester 2004 through 2008

	2004	2005	2006	2007	2008
<b>CONNECTICUT INSTITUTIONS</b>	<b>156</b>	<b>183</b>	<b>189</b>	<b>181</b>	<b>260</b>
<b>Public Four-Year Institutions</b>	<b>25</b>	<b>27</b>	<b>27</b>	<b>39</b>	<b>60</b>
University of Connecticut	6	10	7	13	19
Central Connecticut State University	15	8	7	14	17
Eastern Connecticut State University	2	2	5	5	5
Southern Connecticut State University	2	6	6	4	16
Western Connecticut State University		1	2	3	3
Charter Oak State College					
U.S. Coast Guard Academy					
<b>Community Colleges</b>	<b>112</b>	<b>142</b>	<b>148</b>	<b>129</b>	<b>172</b>
Asnuntuck	6	7	6	6	4
Capital	30	44	36	39	46
Gateway	8	5	3	9	14
Housatonic	1		3	2	0
Manchester	27	32	50	35	63
Middlesex	7	15	7	8	7
Naugatuck Valley	6	15	22	10	8
Northwestern	1	3	3	2	5
Norwalk		1			0
Quinebaug Valley	3	3	1	3	4
Three Rivers	4	2	3	1	3
Tunxis	19	15	14	14	18
<b>Independent Institutions</b>	<b>19</b>	<b>14</b>	<b>14</b>	<b>13</b>	<b>28</b>
Albertus Magnus College	1	2	2		2
Briarwood College	2	2	1	1	5
Connecticut College					0
Fairfield University					
Gibbs College			1		1
Goodwin College					
Hartford Seminary					
Holy Apostles College					
Int. College of Hospitality Mang.					
Lyme Academy of Fine Arts					
Mitchell College		1			
Paier College of Art, Inc.			1		
Quinnipiac University		1		2	2
Rensselaer at Hartford					1
Sacred Heart University	1				
St. Basil College					
St. Joseph College	4	1	7	3	5
St. Thomas Seminary					1
St. Vincent's College					2
Teikyo Post University	4	3		3	
Trinity College	1			1	
University of Bridgeport				2	6
University of Hartford	6	4	1	1	3
University of New Haven			1		

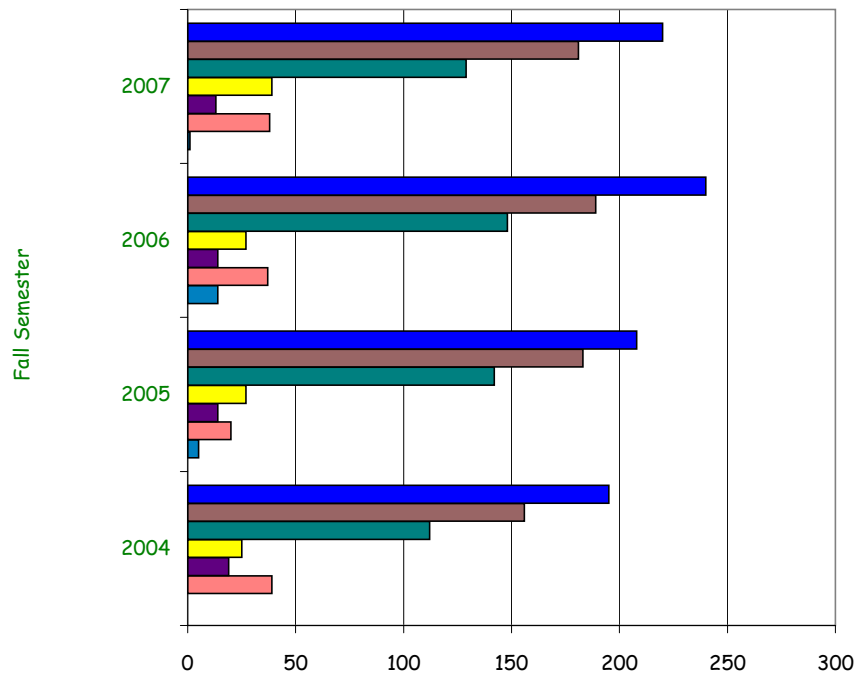
## Transfers from Other Institutions

Goodwin College

Fall Semester 2004 through 2008

	2004	2005	2006	2007	2008
<b>OUT-OF-STATE</b>	<b>39</b>	<b>20</b>	<b>37</b>	<b>38</b>	<b>77</b>
Two-Year Public Institution	13	7	13	8	19
Two-Year Independent Institution	7			5	0
Four-Year Public Institution	7		7	7	11
Four-Year Independent Institution	12	13	17	13	43
Type of Institution Unknown				5	4
<b>PREVIOUS INSTITUTION UNKNOWN</b>		<b>5</b>	<b>14</b>	<b>1</b>	<b>3</b>
<b>TOTAL, ALL INSTITUTIONS</b>	<b>195</b>	<b>208</b>	<b>240</b>	<b>220</b>	<b>340</b>

Transfers to Goodwin College Institutions by Sector



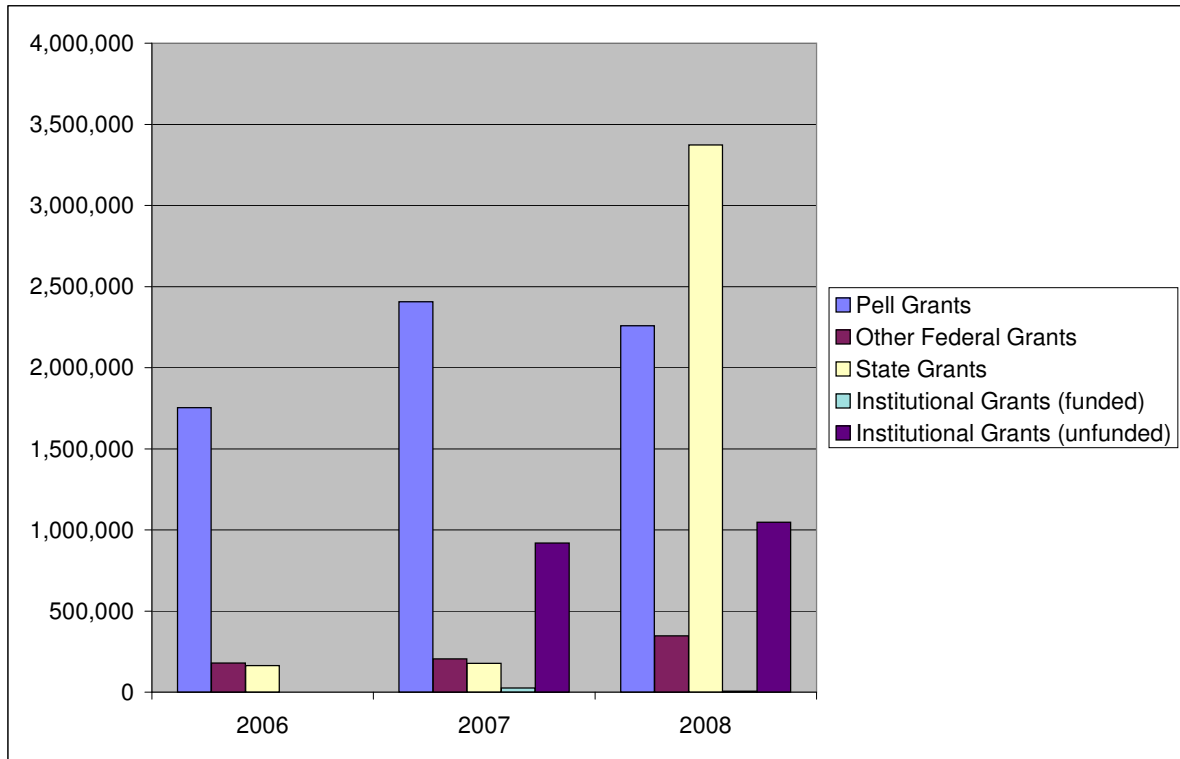
	2004	2005	2006	2007
<b>TOTAL, ALL INSTITUTIONS</b>	195	208	240	220
<b>#REF!</b>	156	183	189	181
<b>Community Colleges</b>	112	142	148	129
<b>Public Four-Year Institutions</b>	25	27	27	39
<b>Independent Institutions</b>	19	14	14	13
<b>OUT-OF-STATE</b>	39	20	37	38
<b>PREVIOUS INSTITUTION UNKNOWN</b>		5	14	1

# Scholarships

Goodwin College

Fiscal Year Ending June 30

SOURCE	2005	2006	2007	2008	4-Yr Change
Pell Grants		1,753,019	2,407,276	2,259,057	29%
Other Federal Grants	0	180,146	205,948	347,416	93%
State Grants	0	164,000	177,546	3,373,045	1957%
Institutional Grants (funded)			25,500	5,000	
Institutional Grants (unfunded)			919,010	1,047,372	
<b>TOTAL</b>		<b>2,097,165</b>	<b>3,735,280</b>	<b>7,031,890</b>	

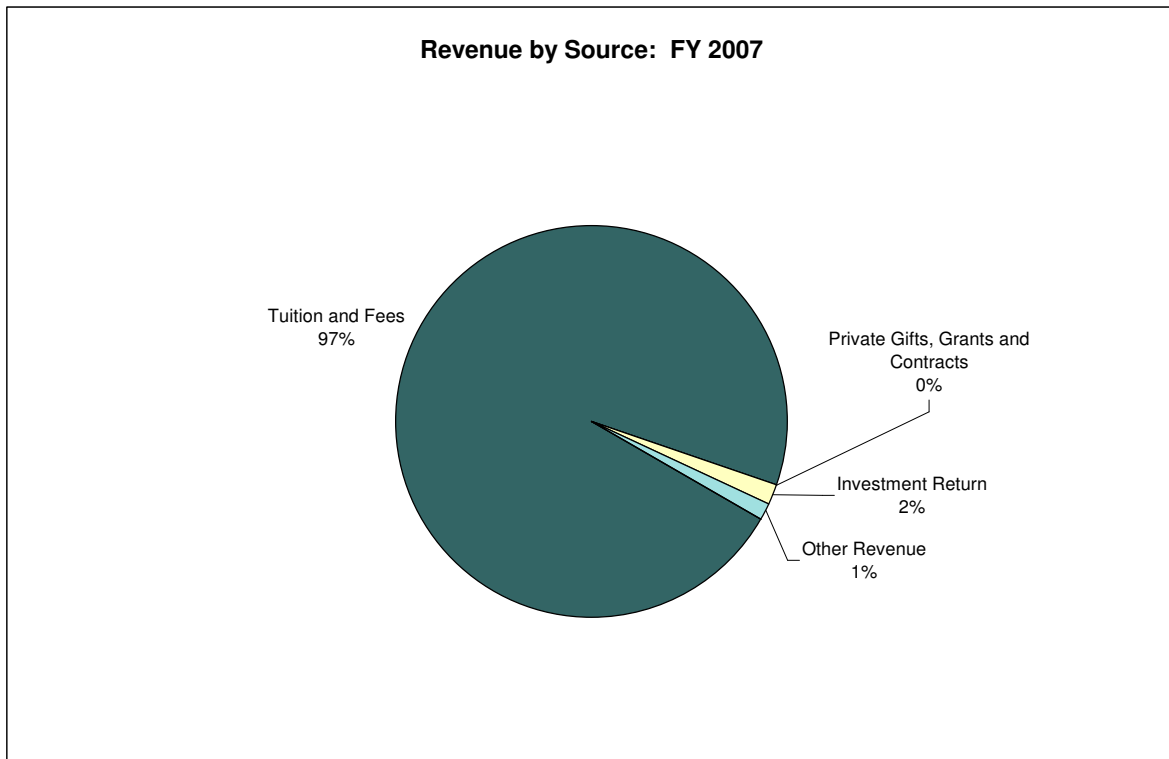


## Revenue by Source

Goodwin College

Fiscal Year Ending June 30

	2005	2006	2007	2008	4-Yr Change
REVENUE					
Tuition and Fees	10,457,423	14,481,062	16,125,936	18,593,309	78%
Private Gifts, Grants and Contracts	42,577	20,000	14,637	511,942	1102%
Investment Return	31,324	79,283	289,658	361,963	1056%
Other Revenue	7,897	791,525	224,120	90,312	1044%
 TOTAL	 10,539,221	 15,371,870	 16,654,351	 19,557,526	 86%

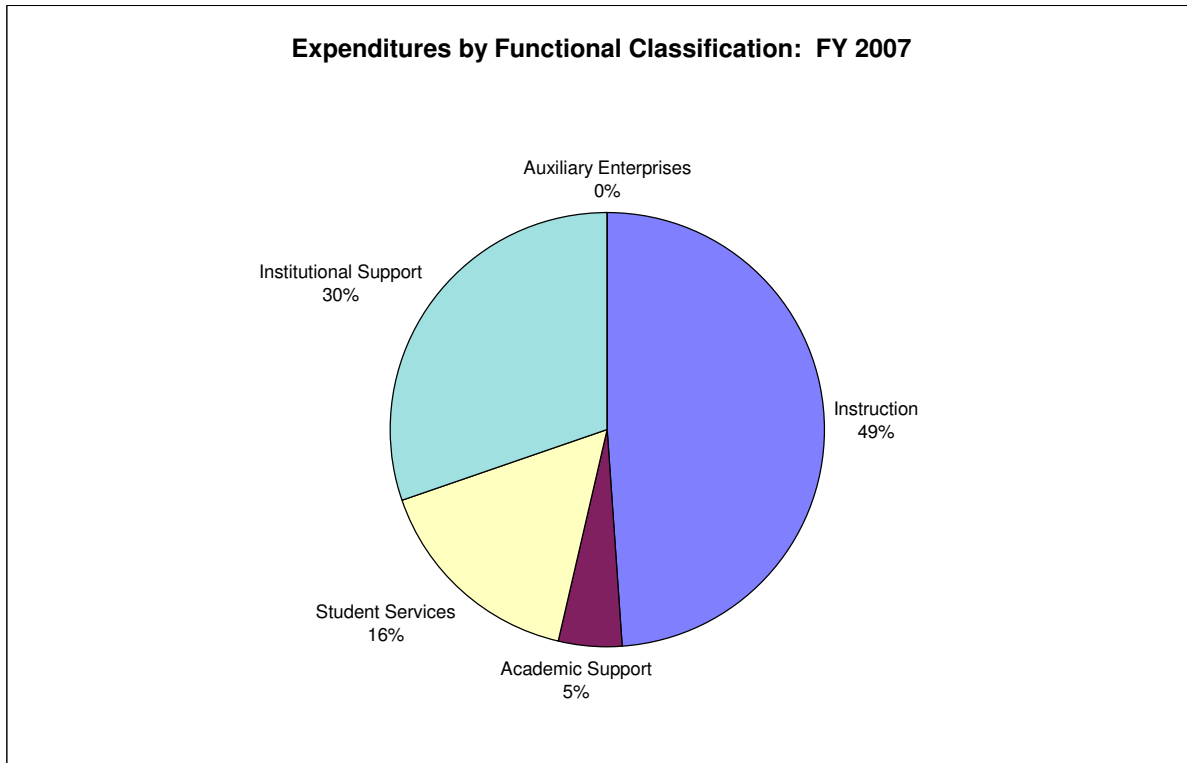


## Expenditures by Functional Classification

Goodwin College

Fiscal Year Ending June 30

EXPENDITURES	2005	2006	2007	2008	4-Yr Change
Instruction	3,293,841	3,851,061	6,740,733	8,249,504	150%
Academic Support	461,332	604,727	654,746	958,183	108%
Student Services	2,125,855	2,858,405	2,207,153	2,855,848	34%
Institutional Support	1,986,541	2,910,552	4,165,636	4,014,274	102%
Auxiliary Enterprises	916,161	839,176	0		
<b>TOTAL</b>	<b>8,783,730</b>	<b>11,063,921</b>	<b>13,768,268</b>	<b>16,077,809</b>	<b>83%</b>



## Value of Endowment Assets

Goodwin College

Fiscal Year Ending June 30

	2005	2006	2007	2008	4-Yr Change
ENDOWMENT ASSEST VALUE					
Beginning of Year			173,000	256,161	
End of Year		173,000	256,161	391,455	
CHANGE	0	173,000	83,161	135,294	

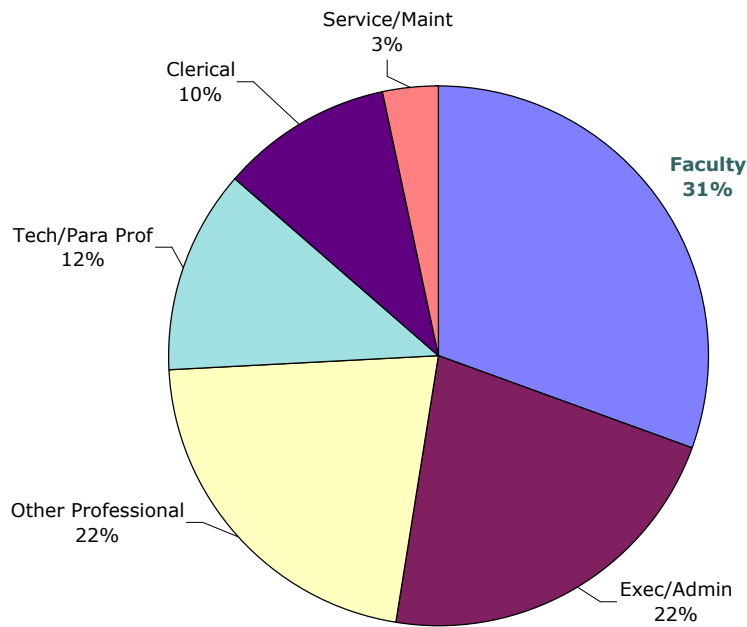
## Employees by Assigned Position

Goodwin College

November 1

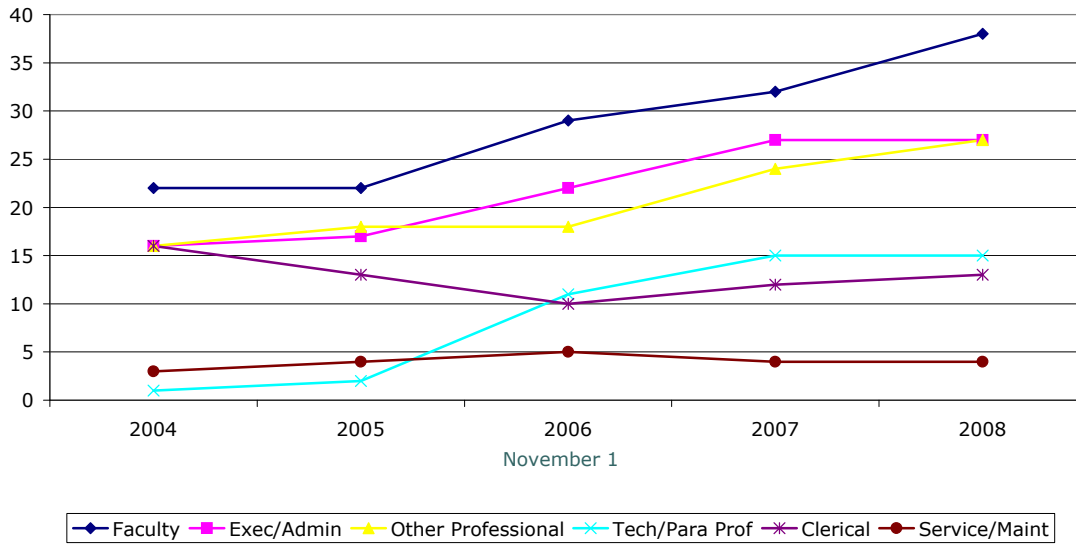
	2004	2005	2006	2007	2008	5-yr Change
<b>FULL-TIME</b>						
Faculty	22	22	29	32	38	73%
Exec/Admin	16	17	22	27	27	69%
Other Professional	16	18	18	24	27	69%
Tech/Para Prof	1	2	11	15	15	1400%
Clerical	16	13	10	12	13	-19%
Service/Maint	3	4	5	4	4	33%
Total FT	74	76	95	114	124	68%
<b>PART-TIME</b>						
Faculty	53	76	80	106	108	104%
Exec/Admin	0	0	0	1	1	na
Other Professional	9	10	9	9	8	-11%
Tech/Para Prof	3	2	3	6	5	67%
Clerical	3	3	3	3	3	0%
Service/Maint	1	1	2	1	2	100%
Total PT	69	92	97	126	127	84%
<b>FTE STUDENTS/FTE FACULTY</b>	<b>N/A</b>	<b>15.6</b>	<b>15.4</b>	<b>15.0</b>	<b>13.2</b>	

**Full-time Staff by Assigned Position:  
November 1, 2008**



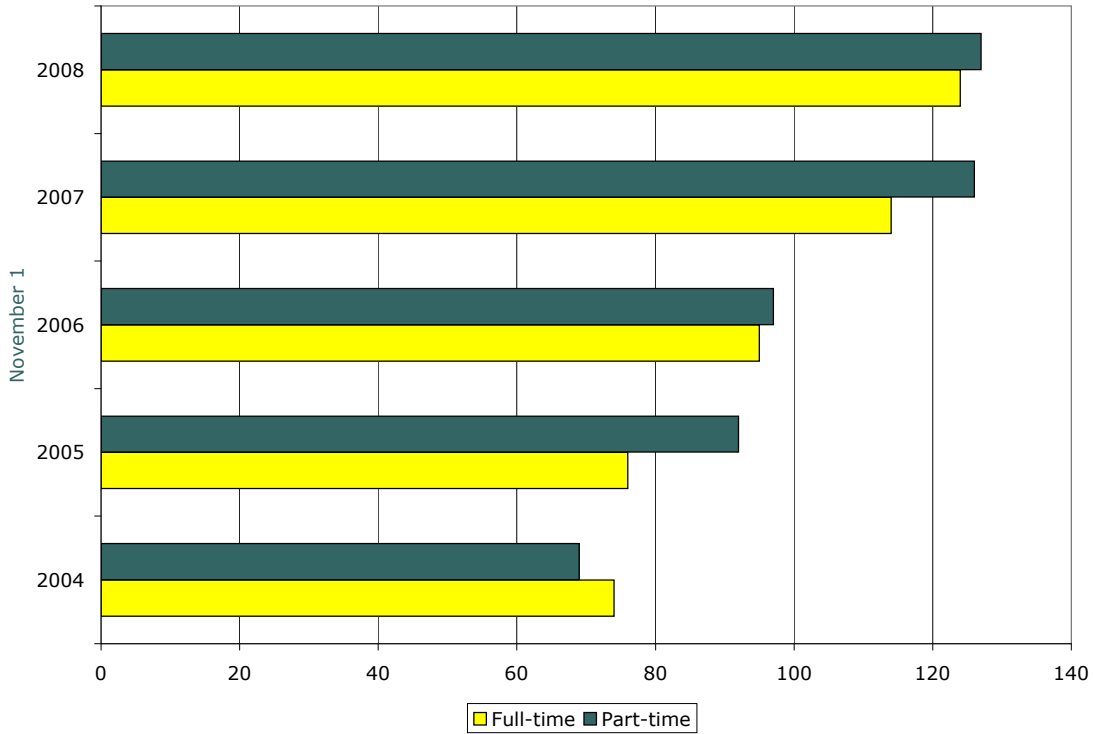
# Employees by Assigned Position

## Full-time Employees by Assigned Position November 1



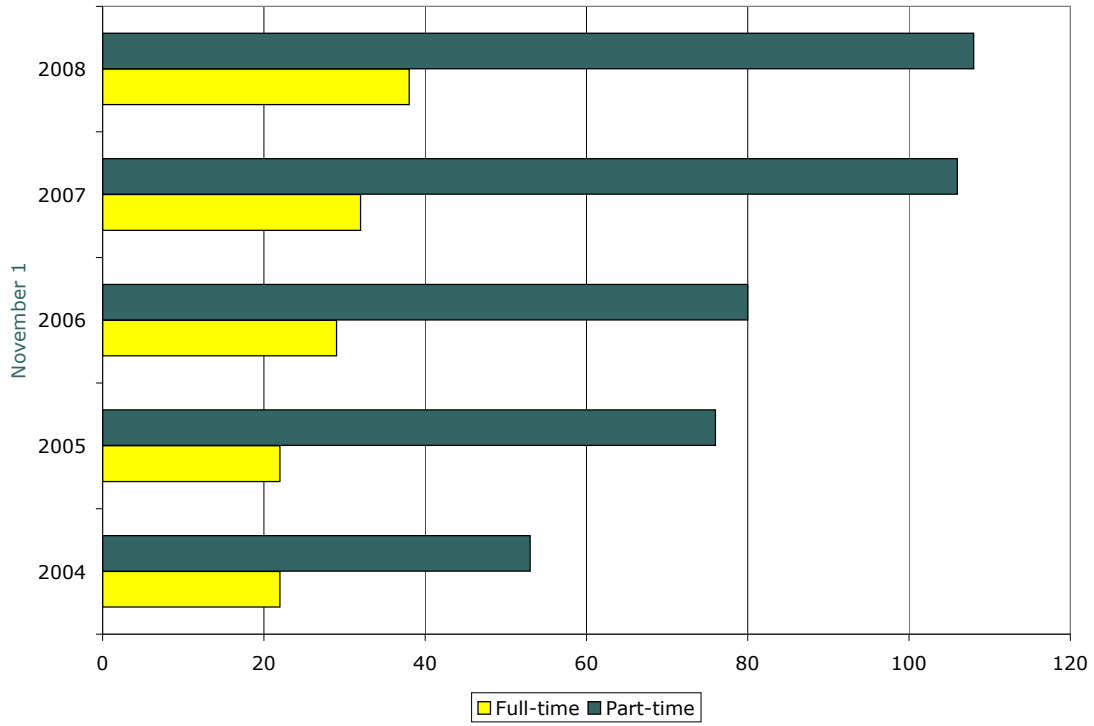
# Employees by Assigned Position

## All Faculty and Staff November 1



# Employees by Assigned Position

## Instructional Faculty November 1



# Graduation Rate

Goodwin College

Fall Cohort

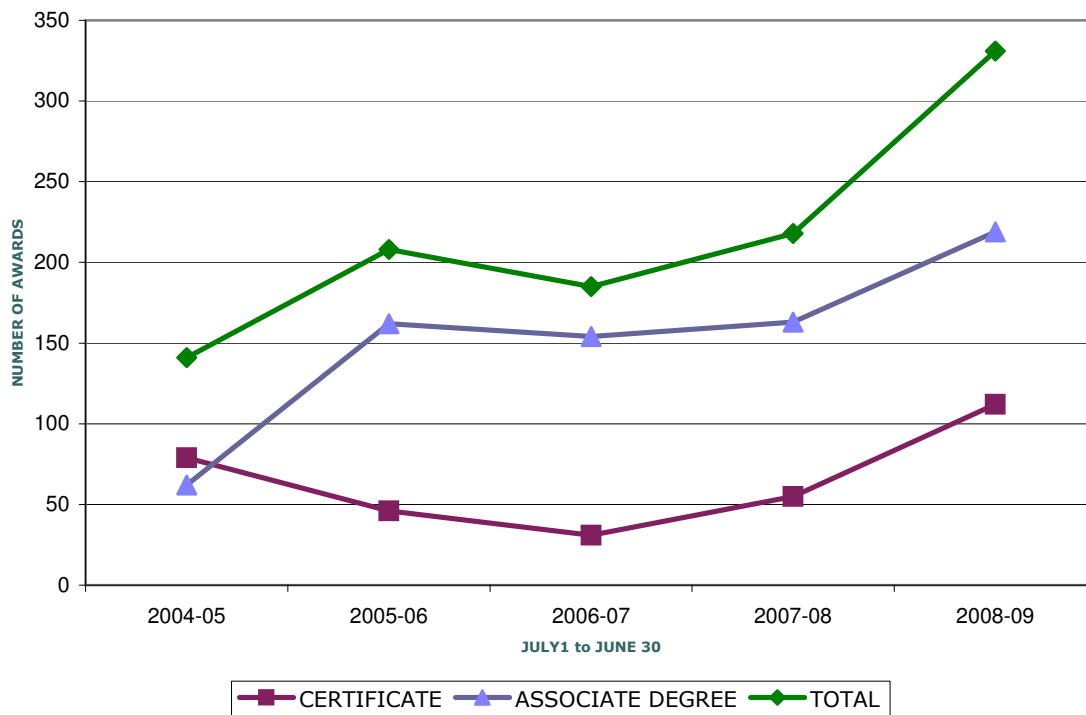
		<b>Cohort</b>	<b>2005 Completers</b>	<b>Rate</b>
Gender	Female	45	20	44%
	Male	6	2	33%
Race/Ethnicity	Black	22	8	36%
	American Indian	0	0	NA
	Asian/Pacific Islander	0	0	NA
	Hispanic	10	4	40%
	White	16	10	63%
	Non-resident Alien	0	0	NA
	Unknown	3	0	0%
TOTAL		51	22	43%

# Degrees Awarded by Level

Goodwin College

July 1 through June 30

	2004-05	2005-06	2006-07	2007-08	2008-09	5-yr Change
<b>CERTIFICATE</b>	79	46	31	55	112	42%
<b>ASSOCIATE DEGREE</b>	62	162	154	163	219	253%
<b>TOTAL</b>	141	208	185	218	331	135%



\*July 1 - June 30